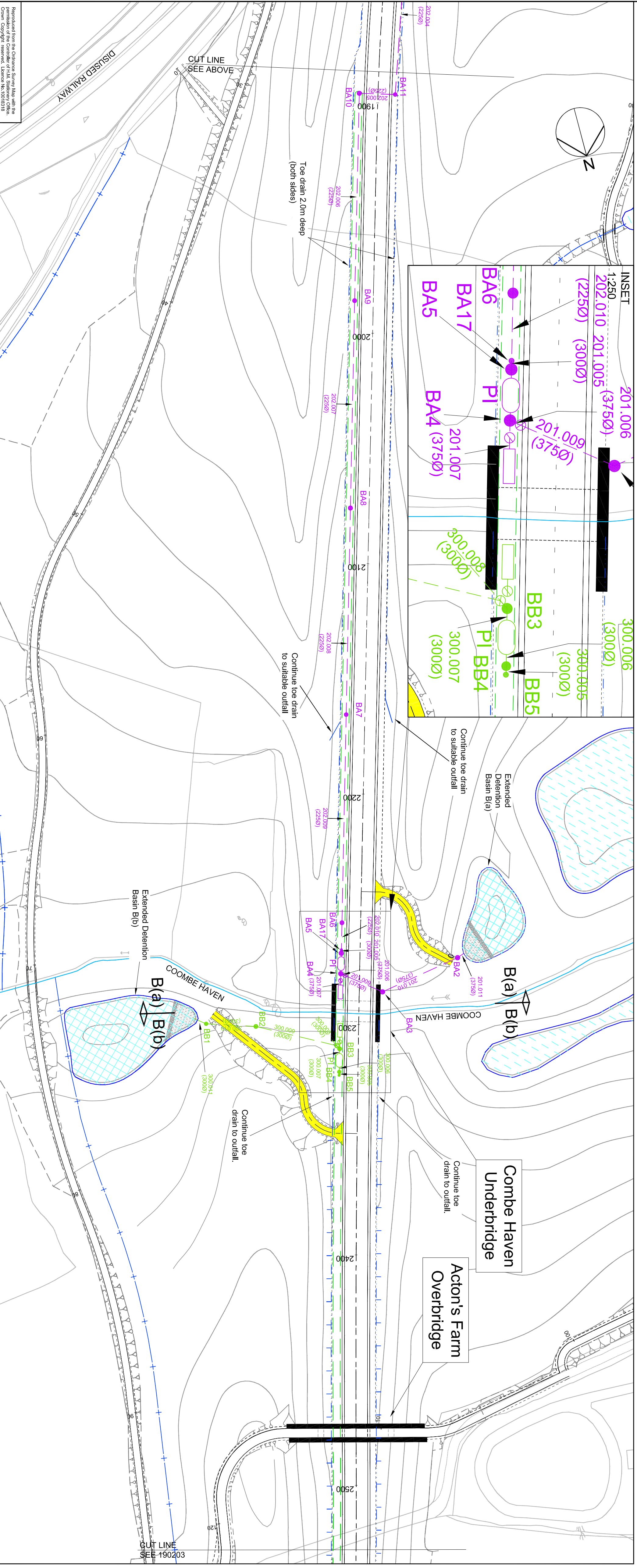
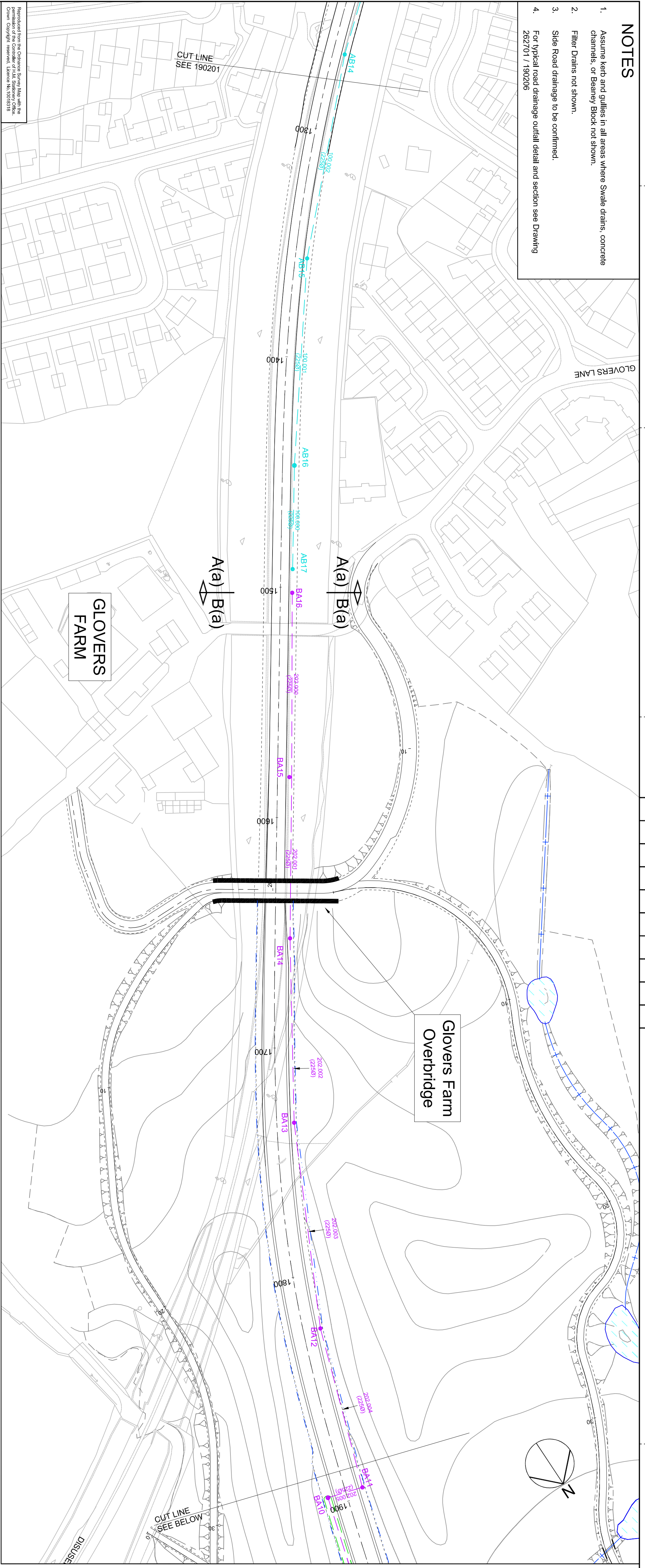


NOTES

1. Assume kerb and gullies in all areas where Swale drains, concrete channels, or Beamy Block not shown.
2. Filter Drains not shown.
3. Side Road drainage to be confirmed.
4. For typical road drainage outfall detail and section see Drawing 262701 / 190206



KEY

- EXISTING**
- Watercourse To Be Relined
 - Watercourse To Be Abandoned
 - Culvert
- PROPOSED**
- Main Line Drainage - Catchment 'AA'
 - Main Line Drainage - Catchment 'AB'
 - Main Line Drainage - Catchment 'BA'
 - Main Line Drainage - Catchment 'BB'
 - Main Line Drainage - Catchment 'CA'
 - Main Line Drainage - Catchment 'CB'
 - Main Line Drainage - Catchment 'DA'
 - Main Line Drainage - Catchment 'DB'
 - Main Line Drainage - Catchment 'E'
 - Online Storage Tanks - Catchment 'AA'
 - Online Storage Tanks - Catchment 'AB'
 - Online Storage Tanks - Catchment 'BA'
 - Egerton Stream Diversion
 - Culvert Diversion (Challage 4x20)
 - Grassed Channel
 - Toe Drain
 - Toe Drain with Face Drains 2m deep @ 10m c/c unless shown otherwise. (Spacing to be confirmed)
 - Concrete Channel
 - Combined Kerb Drainage
 - New Ditch
 - Stream Overflow Tank - Pump
 - Period / Oil Interceptor
 - Spill Tank
 - Valve
 - Pond Maintenance Access Track
 - Extended Detention Basin
 - Pond For Landscape Purposes
 - Sediment Forebay
 - Extent of Hydraulic Model Catchment

Rev	Chkd	Apprd	Date

Drawn: BB	For comment
Chkd: BDE	For tender
Aspc: LB	For construction
Date: 26/02/2007	As constructed
File ref: g:\projects\major_projects\262701_bexhill_hastings.rvt	15 drawings\workingseries 19

Owen Williams
Part of Arney plc

Client
EAST SUSSEX COUNTY COUNCIL
TRANSPORT AND ENVIRONMENT

Project Name
BEXHILL TO HASTINGS
LINK ROAD

Drawing Title
MODIFIED BLUE ROUTE
PLAN OF SCHEME USING
'SOFT' ENGINEERING OPTION
SHEET 2 OF 5

Original Drawing Size: A1
Scale: 1:1000
Dimensions: -

Drawing No
262701 / 190202

Rev	00
-----	----

Produced from the Arney Systems Manual with the permission of the Controller of Her Majesty's Stationery Office. Copyright reserved. Series No.001819